

## ACI EUROPE Airport Traffic Report

December, Q4 and Full Year 2015

Source: ACI WORLD  
ACI EUROPE

# Strong passenger traffic growth in 2015, but freight still in the doldrums

**Brussels, 5 February 2016:** European airport trade association, ACI EUROPE today released its traffic report for **2015**. This is the only air transport report which includes all types of civil aviation passenger flights to and from Europe: full service, low cost, charter and others.

Passenger traffic across the European airport network in 2015 grew by an average **+5.2%**.

At EU airports, the average increase in passenger traffic was **+5.6%** with airports in Ireland, Portugal, Greece, Romania, Hungary, Slovakia, Slovenia and Lithuania achieving double-digit growth. Meanwhile, non-EU airports reported diminished growth of **+3.9%**. This was mainly due to a significant decline in demand for air travel across Russian and Ukrainian airports, as well as almost flat growth in Norway – despite a stellar increase in passenger traffic in Iceland and sustained growth at most Turkish airports.

Freight traffic at Europe's airports only grew by **+0.7%**, as international trade remained subdued. Aircraft movements saw an increase of **+2.2%**.

**Olivier Jankovec, Director General ACI EUROPE** said *"2015 has been a very good year in terms of passenger traffic, with European airports welcoming an estimated 1,95 billion passengers. 20% of them achieved a double-digit increase and many broke new traffic records – mostly fueled by the continued growth of low cost airlines and selected non-EU airlines. EU airports generally performed extremely well, despite Germany and France being impacted by airline & ATC strikes and the Paris terror attacks. Remarkably, Istanbul-Atatürk airport became the 3<sup>rd</sup> busiest European airport with 61,8 million passengers, after London-Heathrow (74,9 million) and Paris-Charles de Gaulle (65,7 million). It should be noted however that small regional airports\* across the continent underperformed the European average, with their passenger volume only increasing by +3,8%. This is indicative of traffic growth becoming more concentrated and less inclusive."*

## COMPARING 2008 AND 2015

Commenting on the air traffic recovery since the global financial crisis, Jankovec added: *"While the EU economy did not even grow by +3% between 2008 and 2015, passenger traffic at EU airports increased by +13,6% over the same period. Such a wide gap is pointing to a lasting discontinuity in the usual relationship between GDP growth and passenger traffic performance. This is reflective of new market dynamics, changing consumer behaviours and the increased importance of air transport for the European economy."*

## CURRENT OUTLOOK

Looking at the outlook for the coming months, Jankovec concluded: *"The positive momentum created by improving economic conditions in the Eurozone, low oil prices and loose monetary policy is likely to persist for most of 2016. This should help keep passenger traffic growing - except for Russian airports. However, downside risks abound, and they are mainly of a geopolitical nature – both homegrown and external. These range from the unprecedented migration crisis and its repercussions on Schengen to the UK Brexit, heightened terrorist threats, instability in the Middle East & North Africa and deteriorating prospects in emerging markets."*

## BREAKDOWN BY TRAFFIC CATEGORY

Over the full year, airports welcoming more than 25 million passengers per year (Group 1), airports welcoming between 10 and 25 million passengers (Group 2), airports welcoming between 5 and 10 million passengers (Group 3) and airports welcoming less than 5 million passengers per year (Group 4) reported an average adjustment **+3.7%**, **+6.3%**, **+7.1%** and **+5.5%**.

The airports which reported the highest increases in passenger traffic during 2015 (compared with 2014) are as follows:

**GROUP 1:** Madrid-Barajas (**+12.0%**), Istanbul IST (**+9.1%**), Amsterdam (**+6.0%**), London LGW and Barcelona El-Prat (**+5.7%**) and Rome FCO (**+5.0%**)

**GROUP 2:** Istanbul SAW (**19.7%**), Athens (**+19.1%**), Dublin (**+15.3%**), London STN (**+12.8%**) and Izmir (**+12.1%**)

**GROUP 3:** Milan BGY (**+18.6%**), Gothenburg GOT (**+18.1%**), Berlin SXF (**+16.9%**), Porto (**+16.7%**) and Glasgow (**+12.9%**)

**GROUP 4:** Ohrid (**+53.3%**), Ponta Delgada (**+29.5%**), Astrakhan (+26.1%), Santorini/Thira (**+87.6%**), Cluj and Timisoara (**+25.8%**)

Among the airports in the Top 5, several airports will now move to a higher traffic category for 2016.\*\*

## DECEMBER

During the month of December, airports welcoming more than 25 million passengers per year (Group 1), airports welcoming between 10 and 25 million passengers (Group 2), airports welcoming between 5 and 10 million passengers (Group 3) and airports welcoming less than 5 million passengers per year (Group 4) reported an average adjustment **+4.0%**, **+6.0%**, **+7.6%** and **+4.8%**.

The airports which reported the highest increases in passenger traffic during the month of December (compared with December 2014) are as follows:

**GROUP 1:** Istanbul IST (**+21.4%**), Copenhagen (**+12.4%**), Madrid-Barajas (**+9.1%**), Barcelona El-Prat (**+8.0%**) and Amsterdam (**+7.8%**)

**GROUP 2:** Istanbul SAW (**22.4%**), Izmir (+18.6%), Alicante (+16.8%), Prague (**+15.3%**) and Dublin (**+12.7%**)

**GROUP 3:** Berlin SXF (**+39.9%**), Cologne (**+22.1%**), Ibiza (+17.5%), Faro (+17.3%) and Porto (**+16.7%**)

**GROUP 4:** Santorini/Thira (**+87.6%**), Ohrid (**+53.3%**), Ponta Delgada (**+29.5%**), Astrakhan (+26.1%), Cluj and Timisoara (**+25.8%**)

The '**ACI EUROPE Airport Traffic Report – December, Q4 and Full Year 2015**' includes 223 airports in total representing more than 88% of European air passenger traffic.

**## ENDS ##**

## Notes to Editors

\* In this context 'small regional airports' refers to non-capital city airports with less than 5 million passengers per annum.

\*\* The following airports will now move up a category in ACI EUROPE's Traffic Reporting. **Istanbul SAW** and **Dublin** both now have more than 25 million passengers a year and will be classified as Group 1 airports. **Birmingham, Budapest, Cologne-Bonn, Milan BGY and Stuttgart**, will move from Group 3 (5 to 10 million passengers a year) to Group 2 (10 to 25 million passengers a year).

## Executive Summary

	Month 2015/2014	Month 2015/2013	Month 2015/2012	YTD 2015/2014	YTD 2015/2013	YTD 2015/2012
<b>Total PAX</b>	<b>5.2%</b>	<b>11.2%</b>	<b>17.5%</b>	<b>5.2%</b>	<b>10.9%</b>	<b>14.2%</b>
EU airports	4.8%	10.8%	15.5%	5.6%	10.8%	11.9%
Non-EU airports	6.4%	12.7%	24.7%	3.9%	11.3%	23.5%
<b>Freight</b>	<b>2.6%</b>	<b>4.5%</b>	<b>8.6%</b>	<b>0.7%</b>	<b>4.6%</b>	<b>6.1%</b>
<b>Movements (total)</b>	<b>3.4%</b>	<b>6.1%</b>	<b>7.9%</b>	<b>2.2%</b>	<b>5.0%</b>	<b>4.0%</b>
PAX + Freight Combined	3.2%	5.8%	7.8%	2.4%	5.2%	4.3%
Cargo only	5.4%	7.7%	11.7%	3.5%	3.9%	2.5%

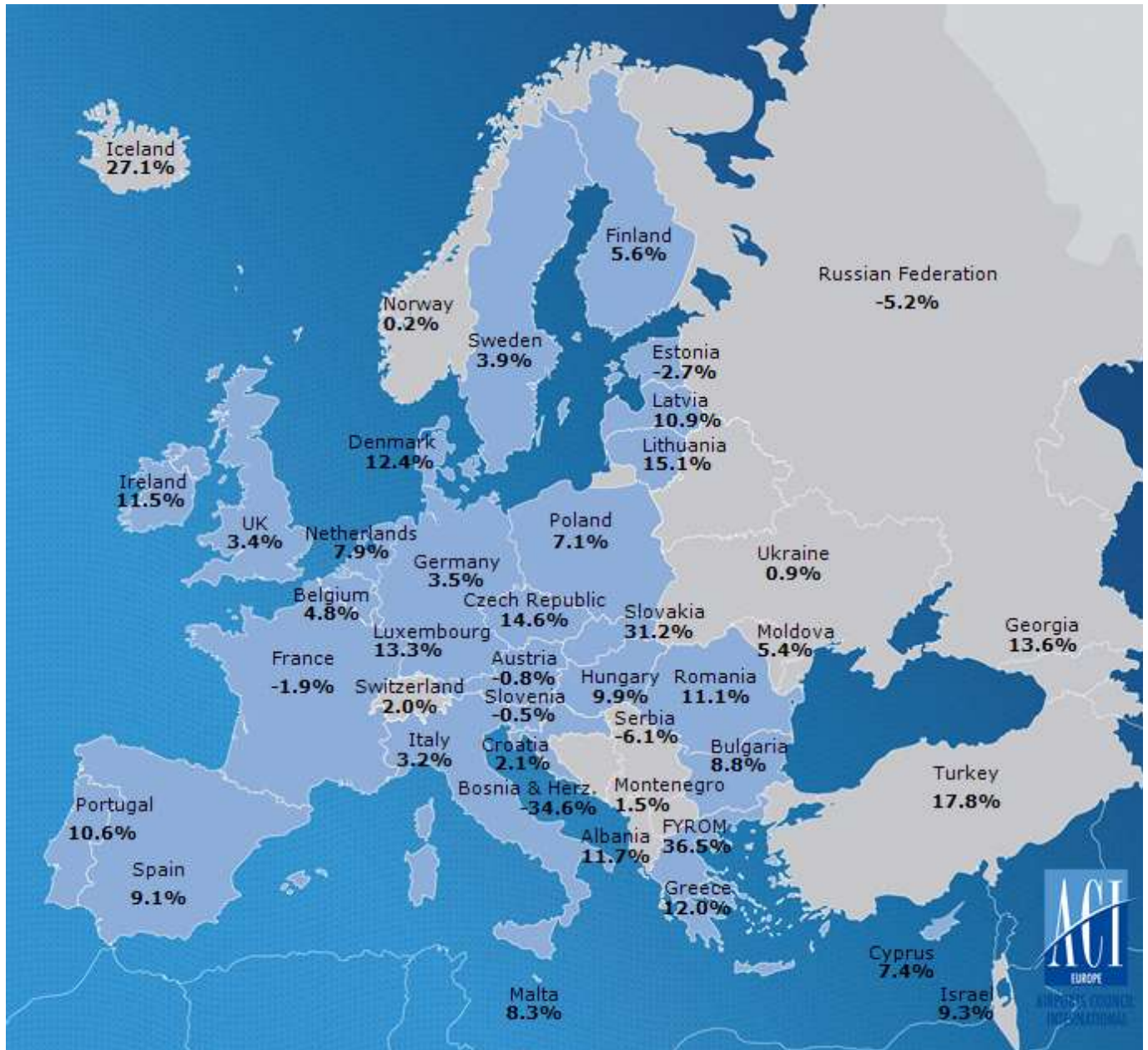
## Passenger Analysis

	Month 2015/2014	Month 2015/2013	Month 2015/2012	YTD 2015/2014	YTD 2015/2013	YTD 2015/2012
<b>Total PAX</b>	<b>5.2%</b>	<b>11.2%</b>	<b>17.5%</b>	<b>5.2%</b>	<b>10.9%</b>	<b>14.2%</b>
International	5.1%	10.9%	17.2%	5.0%	10.7%	15.2%
Domestic	5.2%	11.0%	17.0%	5.5%	10.7%	10.7%
Transit *	18.5%	13.7%	5.5%	2.3%	5.6%	-6.2%

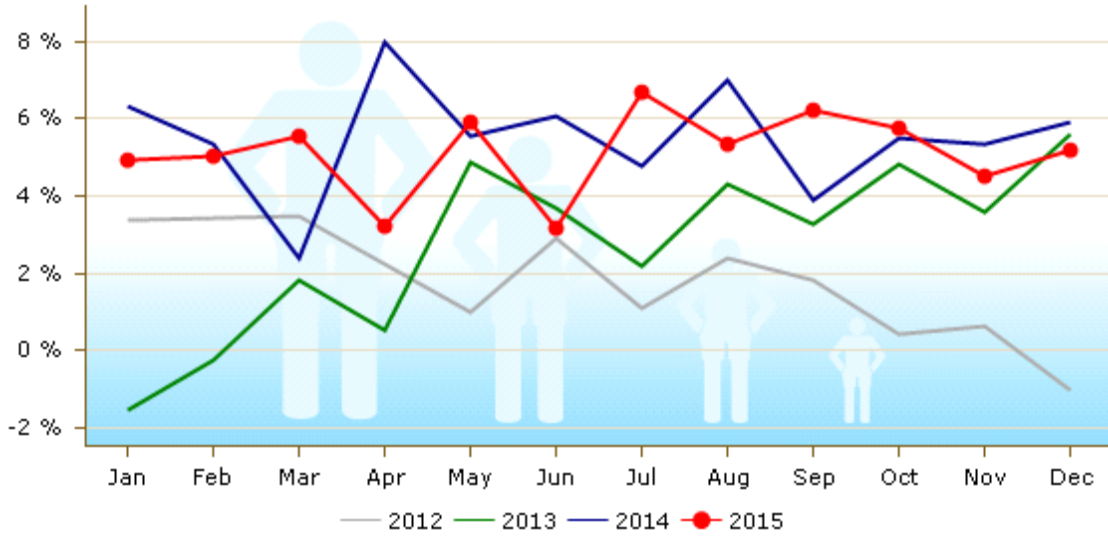
\* Transit passengers refers exclusively to passengers that come to an airport and leave on the same flight with the same flight number.



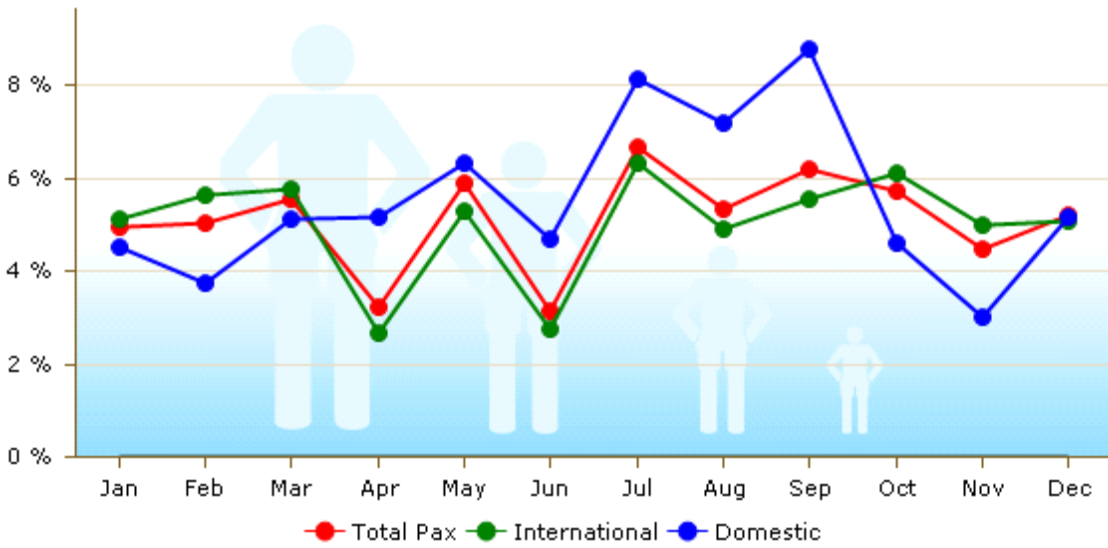
# Passenger Development European Countries December 2015



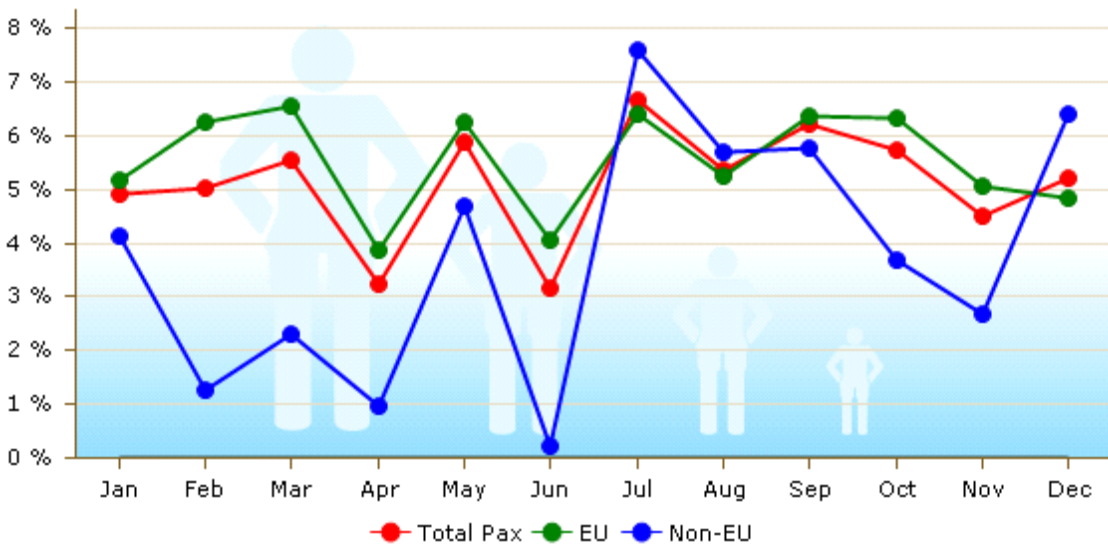
### Total Passenger Development (Year on year changes)



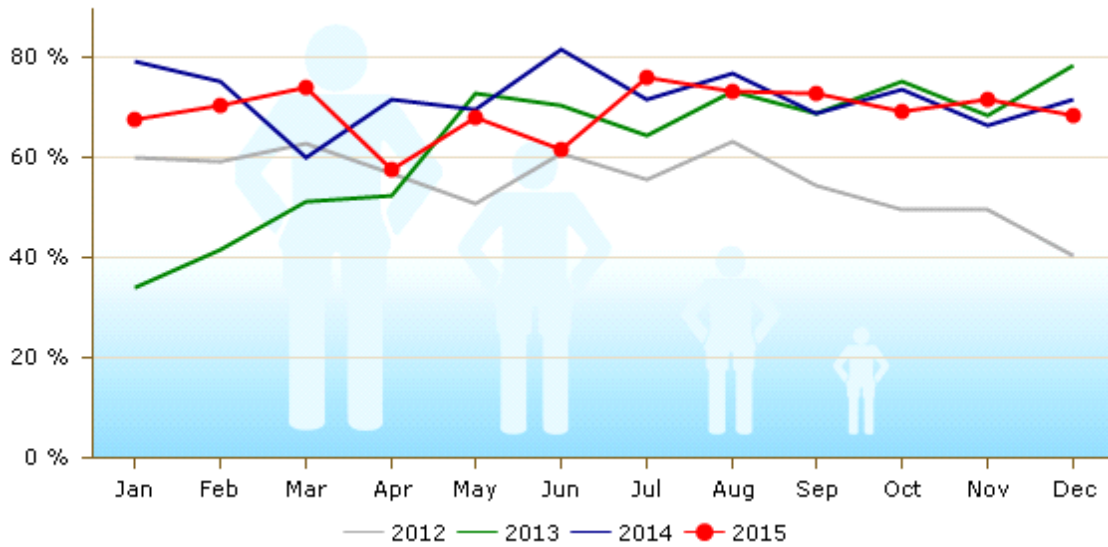
### International & Domestic Passengers



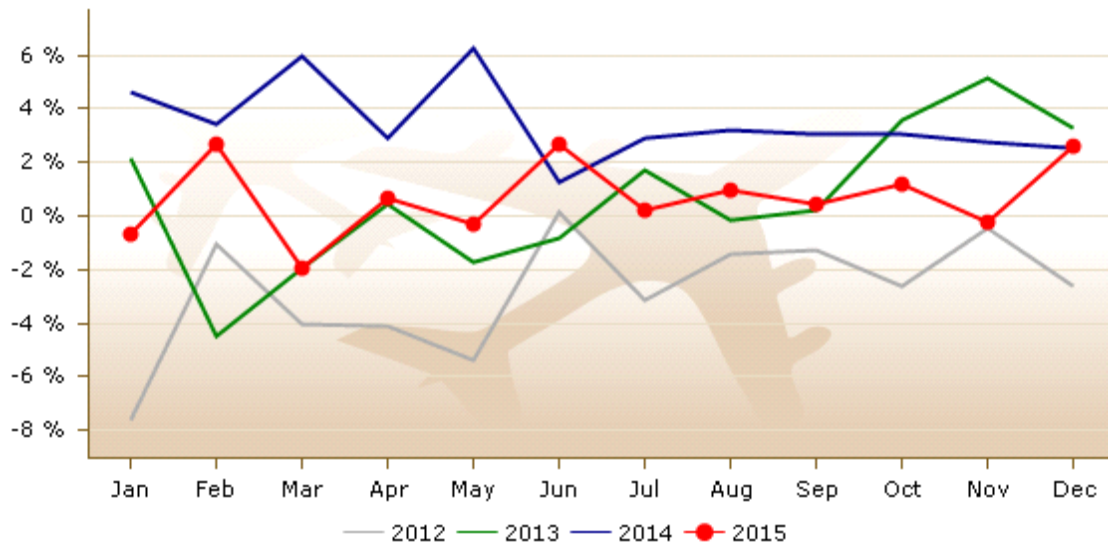
### EU/Non-EU Airports Passenger Traffic



### Percentage of Airports with Increasing Traffic



### Total Freight Development



### Passenger Traffic Growth for December by Traffic Category

Group 1		Group 2		Group 3		Group 4	
Over 25 million pax		Between 10 and 25 million pax		Between 5 and 10 million pax		Less than 5 million pax	
2015/2014	2015/2013	2015/2014	2015/2013	2015/2014	2015/2013	2015/2014	2015/2013
4.0%	9.2%	6.0%	14.0%	7.6%	14.0%	4.8%	9.2%

### Passenger Traffic Growth Year to Date by Traffic Category

Group 1		Group 2		Group 3		Group 4	
Over 25 million pax		Between 10 and 25 million pax		Between 5 and 10 million pax		Less than 5 million pax	
YTD 2015/2014	YTD 2015/2013	YTD 2015/2014	YTD 2015/2013	YTD 2015/2014	YTD 2015/2013	YTD 2015/2014	YTD 2015/2013
3.7%	8.8%	6.3%	13.9%	6.9%	10.4%	5.2%	10.7%

CITY	CODE	Passengers		Commercial Movements		Freight		
		December		December		December		
		2015/2014	2015/2013	2015/2014	2015/2014	2015/2014	2015/2014	
1 London	LHR	5.903.721	-0,4%	2,0%	37,206	-0.2%	127,152	0.8%
2 Istanbul	IST	5.448.137	21,4%	38,3%	36,265	4.3%	64,338	1.8%
3 Paris	CDG	4.834.692	-3,4%	0,4%	36,874	0.3%	165,434	0.7%
4 Amsterdam	AMS	4.290.696	7,8%	13,3%	34,609	5.3%	135,328	1.1%
5 Frankfurt	FRA	4.098.352	2,1%	0,1%	33,121	2.9%	162,693	-1.3%
6 Madrid	MAD	3.648.159	9,1%	19,8%	29,192	5.9%	33,969	0.7%
7 Munich	MUC	2.829.340	1,3%	3,9%	26,348	1.5%	25,923	11.4%
8 Rome	FCO	2.746.806	1,1%	10,8%	23,264	2.4%	11,320	7.2%
9 London	LGW	2.702.759	4,7%	13,0%	19,273	5.3%	6,508	-11.4%
10 Barcelona	BCN	2.602.800	8,0%	12,9%	19,751	5.2%	10,520	19.9%
11 Moscow	SVO	2.314.341	4,2%	9,6%	20,432	3.3%	13,500	-6.4%
12 Istanbul	SAW	2.248.018	22,4%	45,1%	16,946	20.1%	4,738	76.9%
13 Paris	ORY	2.235.907	-1,7%	-0,2%	17,974	-0.2%	10,040	-6.6%
14 Copenhagen	CPH	1.928.890	12,4%	15,9%	18,769	10.5%	N/A	N/A
15 Moscow	DME	1.919.670	-9.0%		18,240	-11.4%	14,174	-7.7%
16 Zurich	ZRH	1.897.698	1,4%	5,9%	18,637	-0.5%	24,483	-1.5%
17 Dublin	DUB	1.785.362	12,7%	26,6%	14,191	8.3%	12,807	15.3%
18 London	STN	1.706.606	9,2%	29,4%	12,529	9.2%	N/A	N/A
19 Oslo	OSL	1.675.489	1,7%	3,8%	16,852	1.6%	9,061	-3.8%
20 Stockholm	ARN	1.672.909	3,6%	8,3%	16,052	2.3%	6,016	3.6%
21 Vienna	VIE	1.585.970	-0,9%	-1,2%	16,397	-0.8%	15,982	-3.4%
22 Brussels	BRU	1.552.696	4,7%	18,6%	16,179	9.1%	37,632	7.0%
23 Manchester	MAN	1.516.254	5,4%	13,0%	11,739	5.3%	8,323	10.3%
24 Berlin	TXL	1.497.416	1,2%	5,9%	13,563	4.3%	3,007	-1.7%
25 Düsseldorf	DUS	1.437.058	-0,6%	6,0%	13,752	-2.4%	7,400	2.6%
26 Lisbon	LIS	1.427.259	7,2%	19,5%	12,856	7.3%	7,422	-8.4%
27 Milan	MXP	1.291.372	1,2%	-2,2%	11,862	4.5%	40,607	3.7%
28 Helsinki	HEL	1.260.905	5,7%	8,7%	12,619	3.2%	9,243	-28.5%
29 Geneva	GVA	1.231.285	3,3%	7,1%	11,959	2.6%	3,988	-5.0%
30 Athens	ATH	1.182.046	11,7%	42,1%	11,095	8.9%	6,711	11.2%
31 Tel-Aviv	TLV	1.071.791	9,3%	13,3%	7,799	5.5%	26,232	6.9%
32 Hamburg	HAM	1.069.398	1,6%	16,5%	10,129	-1.6%	2,857	20.5%
33 Gran Canaria	LPA	1.049.273	7,8%	7,2%	9,234	3.7%	1,730	-3.3%
34 Izmir	ADB	954.553	18,6%	34,6%	5,936	5.2%	2,073	5.1%
35 Ankara	ESB	930.870	2,4%	5,6%	7,261	10.5%	1,354	-0.4%
36 Prague	PRG	866.339	15,3%	20,6%	9,496	14.2%	4,589	32.2%
37 Tenerife	TFS	827.378	4,2%	2,0%	5,432	1.2%	283	-5.1%
38 Berlin	SXF	809.419	39,9%	82,1%	6,284	36.0%	697	29.0%
39 St Petersburg	LED	792.218	-15,0%	-7,8%	9,486	-15.2%	2,251	-13.5%
40 Milan	BGY	779.581	7,7%	20,0%	5,674	6.1%	10,588	-6.5%
41 Edinburg	EDI	754.708	9,1%	17,1%	N/A	N/A	N/A	N/A
42 Malaga	AGP	753.677	10,6%	16,2%	6,094	7.0%	155	-20.7%
43 Budapest	BUD	745.451	9,9%	21,7%	6,483	5.1%	5,252	1.7%
44 Cologne	CGN	742.274	22,1%	32,0%	9,206	15.8%	69,950	10.5%
45 Warsaw	WAW	724.232	1,6%	12,1%	9,464	-0.2%	4,944	18.9%
46 Bucharest	OTP	716.388	12,9%	26,2%	7,486	9.0%	2,470	17.9%
47 Antalya	AYT	706.141	-0,4%	8,3%	4,865	-4.4%	544	-0.7%
48 Nice	NCE	703.583	0,1%	2,7%	8,951	-1.8%	1,260	-6.4%
49 Milan	LIN	700.701	1,9%	5,2%	7,751	7.3%	1,050	4.6%
50 Birmingham	BHX	683.291	9,9%	18,9%	6,816	9.0%	1,454	47.7%
51 Palma De Mallorca	PMI	676.172	7,4%	13,9%	6,713	11.0%	846	7.4%
52 Stuttgart	STR	663.017	6,3%	14,5%	6,950	5.8%	1,697	15.1%
53 Lyon	LYS	626.084	1,5%	1,0%	7,924	1.0%	4,277	11.0%
54 Alicante	ALC	606.972	16,8%	22,4%	4,799	18.7%	432	79.4%
55 Porto	OPO	595.839	13,8%	27,1%	5,324	8.5%	2,494	-14.3%
56 Toulouse	TLS	586.637	-2,0%	0,0%	6,202	0.7%	3,961	-7.0%
57 Glasgow	GLA	569.893	10,2%	25,0%	5,940	11.4%	1,076	-22.8%
58 Marseille	MRS	569.731	-1,7%	-0,1%	6,734	-0.5%	4,726	-1.7%
59 Bologna	BLQ	523.804	13,1%	19,9%	4,875	13.1%	2,918	17.2%
60 Kiev	KBP	520.364	1,4%	-14,2%	4,778	-2.9%	2,800	1.3%
61 Venice	VCE	514.108	6,0%	5,5%	5,275	11.5%	3,361	14.0%
62 Adana	ADA	512.853	23,5%	46,8%	3,323	8.0%	454	-8.3%
63 Lanzarote	ACE	473.137	8,8%	6,7%	3,972	1.5%	161	-0.1%
64 Charleroi	CRL	471.608	3,3%	-0,5%	3,209	6.5%	4	255.0%
65 Basel	BSL	470.075	1,2%	14,8%	4,848	-0.8%	4,266	18.6%



CITY	CODE	Passengers			Commercial Movements		Freight	
		December			December		December	
		2015/2014		2015/2013	2015/2014		2015/2014	
66 Gothenburg	GOT	435.625	2,8%	18,3%	4,901	4.7%	1,133	24.1%
67 Rome	CIA	428.241	4,2%	9,4%	2,813	2.5%	1,504	8.4%
68 Bergen	BGO	400.645	-3,3%	-0,9%	6,352	-4.6%	272	4.2%
69 Fuerteventura	FUE	398.536	9,3%	14,2%	3,309	4.0%	91	6.0%
70 Thessaloniki	SKG	388.993	10,6%	47,8%	N/A	N/A	N/A	N/A
71 Riga	RIX	381.615	10,9%	16,2%	4,955	10.9%	1,072	-12.8%
72 Bordeaux	BOD	370.940	1,5%	8,5%	3,763	1.5%	1,073	40.3%
73 Naples	NAP	365.893	-6,4%	5,1%	3,464	-2.4%	543	3.6%
74 Palermo	PMO	355.495	19,0%	19,0%	2,967	5.3%	66	17.9%
75 London	LCY	329.831	3,6%	42,1%	N/A	N/A	N/A	N/A
76 Tenerife	TFN	328.959	6,7%	9,4%	4,260	4.3%	993	2.0%
77 Valencia	VLC	328.902	12,5%	19,3%	3,567	9.9%	1,057	-33.8%
78 Sevilla	SVQ	317.615	16,6%	24,2%	2,624	12.0%	620	34.4%
79 Sofia	SOF	315.465	8,1%	13,7%	3,046	8.8%	1,799	9.0%
80 Keflavik	KEF	310.061	27,1%	56,2%	2,293	18.1%	3,765	7.2%
81 Belgrade	BEG	307.569	-6,1%	15,0%	3,967	-9.8%	1,631	11.9%
82 Krakow	KRK	305.826	13,8%	21,3%	2,482	4.2%	40	53.8%
83 Hanover	HAJ	305.770	1,4%	3,7%	3,495	1.8%	736	0.1%
84 Stavanger	SVG	296.613	-8,0%	-2,0%	5,164	-8.0%	518	7.5%
85 Bilbao	BIO	294.996	9,9%	10,8%	2,950	8.5%	233	9.1%
86 Trondheim	TRD	293.843	0,5%	-1,5%	3,974	0.8%	116	42.8%
87 Nantes	NTE	283.519	8,2%	9,7%	3,406	1.2%	890	2.9%
88 Turin	TRN	279.800	5,0%	11,7%	2,894	8.2%	268	252.6%
89 Ekaterinburg	SVX	275.577	-8,8%	-13,2%	3,074	-12.5%	2,432	21.6%
90 Eindhoven	EIN	269.560	9,6%	13,3%	1,865	6.1%	N/A	N/A
91 Novosibirsk	OVB	266.792	-9,3%	-11,5%	3,288	-0.5%	2,138	-3.0%
92 Trabzon	TZX	253.979	14,4%	31,5%	1,886	18.2%	169	-14.2%
93 Malta	MLA	248.226	8,3%	12,0%	2,142	5.7%	1,685	30.9%
94 Aberdeen	ABZ	243.470	-14,0%	-6,9%	7,288	-16.6%	574	14.3%
95 Vilnius	VNO	238.821	14,2%	26,7%	2,821	4.3%	660	13.4%
96 Larnaca	LCA	238.135	5,5%	15,5%	2,334	-3.0%	2,331	5.6%
97 Cagliari	CAG	228.243	2,3%	5,7%	1,714	3.8%	134	-5.6%
98 East Midlands	EMA	202.363	7,5%	11,9%	3,916	1.6%	27,574	14.9%
99 Luxembourg	LUX	192.752	13,3%	27,4%	4,165	5.5%	64,764	2.9%
100 Nuremberg	NUE	192.204	-29,1%	-2,7%	2,824	-27.3%	494	-14.5%
101 Stockholm	BMA	190.495	3,7%	7,7%	3,444	-1.1%	N/A	N/A
102 Funchal	FNC	181.380	7,1%	11,7%	1,727	8.8%	322	34.3%
103 Faro	FAO	175.888	17,3%	16,3%	1,523	12.6%	6	-31.3%
104 Katowice	KTW	175.713	21,4%	17,7%	1,677	19.9%	1,166	25.4%
105 Zagreb	ZAG	169.355	3,4%	13,6%	2,588	2.2%	422	16.3%
106 Bremen	BRE	165.555	-3,4%	-3,3%	N/A	N/A	45	7.1%
107 Malmo	MMX	157.697	9,4%	12,3%	1,851	8.2%	2,052	14.4%
108 Tirana	TIA	157.437	11,7%	9,8%	1,536	8.5%	163	-9.4%
109 Chisinau	KIV	155.242	5,4%	51,4%	1,751	1.7%	228	0.9%
110 Tromsoe	TOS	154.234	9,0%	11,9%	2,631	4.9%	104	18.4%
111 Ibiza	IBZ	139.471	17,5%	29,0%	1,867	32.5%	117	7.5%
112 Salzburg	SZG	137.889	-2,7%	6,3%	1,532	-2.1%	13	8.3%
113 Tallinn	TLL	133.677	-2,7%	6,5%	2,341	4.3%	812	-10.3%
114 Verona	VRN	133.126	6,0%	0,9%	1,472	3.4%	645	84.3%
115 Cork	ORK	129.480	2,7%	-6,3%	1,357	5.4%	2	-96.6%
116 Florence	FLR	122.391	-12,1%	13,0%	1,529	-12.9%	4	-24.0%
117 Tbilisi	TBS	119.732	11,6%	22,7%	772	8.3%	1,454	-13.2%
118 Bodo	BOO	119.545	6,6%	7,3%	2,782	2.3%	86	21.4%
119 Southampton	SOU	118.713	-11,0%	2,5%	2,399	-5.6%	20	66.7%
120 Mineralnye Vody	MRV	118.350	-23,6%	-12,2%	1,272	-16.0%	149	-19.0%
121 Skopje	SKP	117.917	34,7%	114,3%	1,123	24.1%	219	-6.2%
122 Kazan	KZN	113.840	-11,6%	-12,2%	1,145	-12.5%	300	-19.5%
123 Pristina	PRN	108.507	-4,6%	0,9%	884	-7.7%	92	-14.0%
124 Cluj	CLJ	104.081	14,8%	43,7%	1,100	10.7%	137	17.0%
125 Strasbourg	SXB	103.354	-10,7%	-2,6%	1,791	-3.2%	4	-55.6%
126 Shannon	SNN	101.237	2,0%	15,1%	1,237	-9.4%	1,053	28.4%
127 Bratislava	BTS	98.175	31,2%	15,0%	1,013	23.1%	1,808	13.4%
128 Lille	LIL	94.398	0,3%	-1,9%	3,125	163.7%	3,606	13.0%
129 Rovaniemi	RVN	94.009	15,1%	18,7%	N/A	N/A	N/A	N/A
130 Ponta Delgada	PDL	90.645	50,2%	72,9%	1,018	46.7%	341	-11.6%

CITY	CODE	Passengers			Commercial Movements		Freight	
		December			December		December	
		2015/2014	2015/2013		2015/2014		2015/2014	
131 Paphos	PFO	87.851	12,6%	32,1%	604	8.2%	23	-73.3%
132 Luleå	LLA	87.524	2,0%	6,7%	864	1.1%	36	33.3%
133 Trapani	TPS	83.515	-4,7%	-12,1%	628	-1.9%	1	-50.0%
134 Bodrum	BJV	81.997	11,8%	31,9%	574	-5.9%	8	60.0%
135 Umeå	UME	81.741	4,8%	4,8%	1,127	-2.7%	30	30.4%
136 Ljubljana	LJU	80.304	-0,2%	3,6%	1,604	3.2%	843	13.6%
137 Oulunsalo	OUL	76.092	9,6%	4,9%	N/A	N/A	N/A	N/A
138 Heraklion	HER	72.814	0,3%	9,6%	N/A	N/A	N/A	N/A
139 Kristiansand	KRS	71.924	-1,5%	-3,7%	1,228	3.0%	88	-0.5%
140 Aalesund	AES	71.642	-7,6%	-8,6%	967	-7.6%	22	-23.5%
141 Brest	BES	71.418	1,4%	6,8%	1,019	1.9%	152	-59.6%
142 Volgograd	VOG	69.871	30,2%	75,1%	321	-13.5%	87	-9.8%
143 Chania	CHQ	68.507	17,6%	89,5%	N/A	N/A	N/A	N/A
144 Isle Of Man	IOM	63.942	6,2%	7,8%	1,992	5.4%	28	-24.3%
145 Timisoara	TSR	63.752	-2,2%	15,7%	780	0.8%	273	78.5%
146 Menorca	MAH	62.629	13,6%	14,1%	1,191	46.1%	97	-23.8%
147 Ajaccio	AJA	61.759	2,8%	3,2%	N/A	N/A	556	18.0%
148 Biarritz	BIQ	61.188	-7,5%	-9,9%	606	-2.4%	N/A	N/A
149 Odessa	ODS	59.643	-13,1%	-17,6%	563	-23.3%	53	-4.4%
150 Rhodes	RHO	57.275	11,9%	31,3%	N/A	N/A	N/A	N/A
151 Graz	GRZ	54.449	17,3%	9,5%	908	6.9%	11	57.1%
152 Pau	PUF	53.156	-1,3%	-5,3%	751	5.2%	152	120.3%
153 Trieste	TRS	52.415	9,0%	11,0%	620	10.5%	6	-77.8%
154 Kaunas	KUN	50.967	19,4%	41,1%	479	14.0%	30	2,930.0%
155 Olbia	OLB	50.868	7,4%	5,1%	471	6.6%	7	-68.7%
156 Girona	GRO	47.625	-3,1%	-27,4%	365	-8.5%	0	-97.7%
157 Harstad	EVE	47.246	-0,6%	1,1%	700	6.7%	26	-3.3%
158 Mugla	DLM	46.448	31,2%	30,3%	338	30.0%	2	-66.7%
159 Podgorica	TGD	45.202	2,4%	23,5%	342	1.2%	67	26.6%
160 Haugesund	HAU	43.187	-6,1%	-3,1%	522	-3.0%	18	16.8%
161 Tomsk	TOF	38.287	-6,0%	-2,1%	281	-6.0%	177	-14.1%
162 Ostersund	OSD	38.243	8,8%	14,7%	585	-1.8%	9	28.6%
163 Astrakhan	ASF	37.529	15,5%	-90,4%	264	1.1%	96	-14.1%
164 Molde	MOL	36.737	8,1%	12,1%	596	7.4%	25	12.3%
165 Lviv	LWO	35.950	-1,9%	-17,6%	506	-6.3%	199	2,111.1%
166 Toulon	TLN	32.333	-2,5%	-4,2%	440	-0.5%	N/A	N/A
167 Kharkiv	HRK	32.000	33,4%	-25,7%	330	65.0%	6	-40.0%
168 Bournemouth	BOH	31.427	67,5%	50,2%	477	50.0%	6	-95.8%
169 Varna	VAR	29.617	22,0%	40,1%	324	21.3%	28	600.5%
170 Santorini/Thira	JTR	29.284	154,5%	232,5%	N/A	N/A	N/A	N/A
171 Split	SPU	28.367	-10,8%	1,3%	392	-8.6%	16	-11.1%
172 Sarajevo	SJJ	28.167	-34,6%	-23,4%	399	7.5%	84	-37.3%
173 Mytilene	MJT	26.456	20,0%	21,6%	N/A	N/A	N/A	N/A
174 Clermont-Ferrand	CFE	26.447	-11,2%	-8,7%	665	-9.2%	130	-9.1%
175 Alta	ALF	25.333	3,6%	15,7%	556	8.2%	27	-13.1%
176 Visby	VBY	25.304	7,7%	23,1%	579	-12.4%	7	-12.5%
177 Friedrichshafen	FDH	25.169	-11,3%	-16,1%	361	-33.9%	N/A	N/A
178 Kristiansund	KSU	25.144	-5,0%	7,8%	818	-11.8%	8	32.2%
179 Turku	TKU	24.082	7,5%	0,8%	N/A	N/A	N/A	N/A
180 Chambery	CMF	23.737	6,7%	-16,1%	730	7.7%	N/A	N/A
181 Kirkenes	KKN	23.172	18,6%	17,5%	579	24.0%	33	19.3%
182 Vaasa	VAA	22.429	-4,2%	5,7%	N/A	N/A	N/A	N/A
183 Linz	LNZ	21.078	-14,5%	-16,5%	411	-32.3%	601	-27.6%
184 Kiruna	KRN	20.307	-3,3%	-13,2%	201	2.6%	14	180.0%
185 Sibiu	SBZ	19.072	-11,2%	14,8%	288	-19.6%	N/A	N/A
186 Dubrovnik	DBV	18.417	19,9%	4,4%	242	13.1%	17	-2.9%
187 Bardufoss	BDU	17.066	-2,1%	1,7%	171	4.9%	5	18.8%
188 Ronneby	RNB	16.947	6,1%	6,3%	332	9.2%	1	0.0%
189 Tivat	TIV	16.714	-1,0%	2,0%	142	1.4%	1	-10.0%
190 Kerkyra	CFU	15.683	-3,7%	9,8%	N/A	N/A	N/A	N/A
191 Klagenfurt	KLU	15.343	-2,0%	-8,4%	280	1.4%	N/A	N/A
192 Ostend	OST	14.469	42,7%	54,6%	229	16.8%	1,789	-27.7%
193 Tampere	TMP	12.819	-40,6%	-46,0%	N/A	N/A	N/A	N/A
194 Floro	FRO	12.734	-15,8%	16,8%	765	-10.0%	N/A	N/A
195 Liege	LGG	12.710	73,7%	15,6%	2,407	17.9%	58,159	9.8%

CITY	CODE	Passengers			Commercial Movements		Freight	
		December			December		December	
		2015/2014	2015/2013		2015/2014		2015/2014	
196 Brno	BRQ	12.680	-20,6%	-21,7%	184	-2.6%	198	-19.8%
197 Hammerfest	HFT	12.127	26,8%	23,5%	773	17.8%	N/A	N/A
198 Kos	KGS	11.754	-2,7%	6,1%	N/A	N/A	N/A	N/A
199 Palanga	PLQ	11.206	15,1%	15,9%	188	22.9%	N/A	N/A
200 Bourgas	BOJ	11.181	-2,8%	25,2%	178	56.1%	1,958	655.9%
201 Batumi	BUS	9.984	44,8%	0,8%	66	29.4%	N/A	N/A
202 Bronnoysund	BNN	9.420	-8,2%	1,9%	551	-9.4%	N/A	N/A
203 Orsta	HOV	8.765	-3,3%	6,7%	367	-5.7%	N/A	N/A
204 Mo i Rana	MQN	8.752	12,0%	24,3%	476	1.7%	N/A	N/A
205 Stokmarknes	SKN	8.050	5,6%	3,1%	414	3.5%	N/A	N/A
206 Ostrava	OSR	7.920	28,2%	49,8%	228	10.1%	253	2,203.6%
207 Leknes	LKN	7.705	8,2%	5,0%	387	4.0%	N/A	N/A
208 Sandnessjoen	SSJ	7.625	8,0%	5,0%	483	3.6%	N/A	N/A
209 Vadso	VDS	7.571	4,8%	7,9%	510	4.5%	N/A	N/A
210 Ohrid	OHD	7.409	73,3%	-20,0%	60	36.4%	2	-36.7%
211 Mosjoen	MJF	6.476	11,3%	7,6%	455	4.1%	N/A	N/A
212 Quimper	UIP	6.380	-12,5%	-28,3%	132	-17.5%	N/A	N/A
213 Forde	FDE	6.316	-0,9%	3,7%	333	6.4%	N/A	N/A
214 Longyearbyen	LYR	5.941	-20,6%	-19,2%	192	-25.3%	12	-41.9%
215 Sogndal	SOG	5.749	18,3%	-5,8%	371	6.6%	N/A	N/A
216 Mikonos	JMK	4.768	19,3%	72,4%	N/A	N/A	N/A	N/A
217 Monaco	MCM	4.680	-34,6%	-18,2%	1,836	-18.5%	N/A	N/A
218 Oradea	OMR	1.818	-28,4%	-36,5%	82	-26.8%	N/A	N/A
219 Kefallinia	EFL	1.800	-16,1%	16,7%	N/A	N/A	N/A	N/A
220 Zakynthos Island	ZTH	1.422	5,9%	20,0%	N/A	N/A	N/A	N/A
221 Zadar	ZAD	1.254	-37,9%	-38,1%	70	-28.6%	N/A	N/A
222 Bucharest	BBU	145	-22,9%	-50,7%	74	-10.8%	N/A	N/A
223 Maribor	MBX	53	-82,5%	-93,6%	4	100.0%	N/A	N/A

Group 1	Group 2	Group 3	Group 4
Over 25 million pax	Between 10 and 25 million pax	Between 5 and 10 million pax	Less than 5 million pax

CITY	CODE	Passengers			Commercial Movements		Freight		
		Full Year			Full Year		Full Year		
		2015/2014	2015/2013		2015/2014		2015/2014		
1	London	LHR	74.989.914	2.2%	3.6%	472,067	0.3%	1,496,654	-0.2%
2	Paris	CDG	65.771.288	3.1%	6.0%	469,322	0.9%	1,861,197	-1.4%
3	Istanbul	IST	61.804.472	9.1%	20.9%	447,524	6.6%	748,914	3.1%
4	Frankfurt	FRA	61.032.022	2.5%	5.2%	456,835	-0.3%	1,993,466	-2.8%
5	Amsterdam	AMS	58.284.848	6.0%	10.9%	450,679	2.8%	1,620,969	-0.7%
6	Madrid	MAD	46.814.739	12.0%	17.9%	365,955	7.0%	378,087	3.0%
7	Munich	MUC	40.981.522	3.2%	6.0%	360,009	0.8%	317,386	8.9%
8	Rome	FCO	40.422.156	5.0%	11.8%	311,824	1.3%	138,225	2.7%
9	London	LGW	40.269.497	5.7%	13.6%	265,821	3.9%	73,402	-17.2%
10	Barcelona	BCN	39.689.800	5.7%	12.8%	285,874	1.7%	114,641	11.6%
11	Moscow	SVO	31.612.402	0.1%	8.1%	256,104	3.6%	142,612	-13.6%
12	Moscow	DME	30.504.515	-7.7%	-0.8%	253,084	-8.9%	133,185	-17.9%
13	Paris	ORY	29.665.218	2.8%	4.9%	231,111	1.3%	116,681	12.6%
14	Istanbul	SAW	28.285.578	19.7%	50.1%	206,180	19.3%	43,736	11.3%
15	Antalya	AYT	27.783.199	-2.5%	1.4%	165,491	0.4%	N/A	N/A
16	Copenhagen	CPH	26.577.931	3.9%	10.6%	248,701	1.3%	N/A	N/A
17	Zurich	ZRH	26.229.641	3.2%	5.7%	249,529	0.2%	292,085	-2.8%
18	Dublin	DUB	25.051.788	15.3%	24.2%	188,413	9.4%	135,505	12.8%
19	Oslo	OSL	24.489.047	1.7%	6.7%	234,356	-2.5%	99,802	0.5%
20	Palma De Mallorca	PMI	23.739.676	2.7%	4.3%	176,736	3.2%	11,433	-0.7%
21	Brussels	BRU	23.423.614	6.9%	22.6%	221,054	3.5%	462,992	8.2%
22	Manchester	MAN	23.206.537	5.2%	11.4%	164,892	1.1%	100,038	6.7%
23	Stockholm	ARN	23.173.457	3.2%	11.9%	216,685	-1.0%	71,986	8.1%
24	Vienna	VIE	22.775.108	1.3%	3.5%	225,202	-1.9%	196,274	-0.8%
25	London	STN	22.503.551	12.8%	26.1%	154,738	8.0%	N/A	N/A
26	Düsseldorf	DUS	22.476.685	2.9%	5.9%	199,402	-0.4%	89,884	-7.3%
27	Berlin	TXL	21.005.196	1.5%	7.2%	178,538	0.8%	35,096	-1.3%
28	Lisbon	LIS	20.090.254	10.7%	25.5%	162,042	6.4%	91,965	-2.4%
29	Milan	MLX	18.572.440	-1.4%	3.5%	156,642	-3.9%	500,053	8.8%
30	Athens	ATH	18.073.940	19.1%	44.4%	158,268	14.8%	71,784	5.5%
31	Helsinki	HEL	16.420.162	3.0%	7.5%	165,340	0.4%	142,360	-19.7%
32	Tel-Aviv	TLV	16.302.529	9.2%	N/A	109,999	6.3%	279,395	2.6%
33	Geneva	GVA	15.691.077	4.1%	9.4%	147,558	2.1%	46,033	-6.6%
34	Hamburg	HAM	15.610.068	5.8%	15.6%	143,190	2.8%	31,285	8.1%
35	Malaga	AGP	14.386.387	4.8%	11.5%	104,539	2.1%	2,515	0.8%
36	St Petersburg	LED	13.211.371	-7.4%	2.8%	137,529	-6.2%	22,535	-11.1%
37	Izmir	ADB	12.331.965	12.1%	20.2%	80,116	10.2%	N/A	N/A
38	Ankara	ESB	12.102.908	9.3%	10.1%	88,292	7.5%	N/A	N/A
39	Prague	PRG	12.030.928	7.9%	9.6%	125,050	2.2%	42,861	-5.2%
40	Nice	NCE	12.015.914	3.1%	4.0%	157,776	0.3%	14,278	-6.7%
41	Warsaw	WAW	11.205.222	5.8%	4.9%	129,995	2.6%	58,356	9.1%
42	Edinburg	EDI	11.115.508	9.4%	13.7%	N/A	N/A	N/A	N/A
43	Gran Canaria	LPA	10.619.282	3.0%	8.8%	94,703	-2.7%	18,705	-5.6%
44	Alicante	ALC	10.566.860	5.0%	9.7%	73,713	3.9%	3,403	29.0%
45	Stuttgart	STR	10.512.225	8.2%	9.8%	101,169	6.7%	19,983	-0.9%
46	Milan	BGY	10.402.729	18.6%	16.1%	73,046	12.0%	120,937	-1.3%
47	Cologne	CGN	10.338.375	9.4%	13.9%	115,181	4.4%	742,610	0.4%
48	Budapest	BUD	10.289.180	12.5%	20.9%	86,047	6.8%	62,219	6.0%
49	Birmingham	BHX	10.186.622	4.9%	11.6%	91,670	1.3%	18,973	34.2%
50	Milan	LIN	9.641.099	7.3%	7.3%	96,049	5.7%	12,434	-2.2%
51	Bucharest	OTP	9.282.884	11.6%	21.4%	92,708	6.0%	27,903	7.8%
52	Tenerife	TFS	9.077.983	-0.7%	4.7%	55,870	-3.7%	2,838	-28.6%
53	Lyon	LYS	8.793.312	3.5%	2.7%	105,617	-0.6%	48,810	3.5%
54	Venice	VCE	8.735.876	3.2%	4.1%	75,181	4.1%	42,594	17.1%
55	Glasgow	GLA	8.714.726	12.9%	18.3%	80,509	8.4%	13,456	-14.6%
56	Berlin	SXF	8.526.268	16.9%	29.6%	65,495	11.8%	7,199	0.1%
57	Marseille	MRS	8.261.720	1.0%	0.0%	90,648	-1.4%	52,192	-2.2%
58	Porto	OPO	8.087.177	16.7%	26.9%	69,375	11.6%	29,409	-1.1%
59	Toulouse	TLS	7.669.054	2.0%	1.3%	81,684	-1.0%	58,895	-0.6%
60	Basel	BSL	7.053.192	8.3%	20.3%	67,842	2.4%	48,990	15.7%
61	Charleroi	CRL	6.945.931	8.0%	2.5%	44,220	4.3%	25	25.0%
62	Bologna	BLQ	6.882.014	4.7%	11.2%	59,223	0.2%	30,854	-4.0%
63	Ibiza	IBZ	6.468.233	4.3%	13.1%	59,429	7.2%	2,063	2.0%
64	Faro	FAO	6.436.881	4.4%	7.6%	43,096	1.6%	152	0.0%
65	Gothenburg	GOT	6.184.153	18.1%	22.9%	64,825	11.7%	11,968	-22.2%



CITY	CODE	Passengers			Commercial Movements		Freight		
		Full Year			Full Year		Full Year		
		2015/2014	2015/2013		2015/2014		2015/2014		
66	Naples	NAP	6.163.116	3.4%	13.2%	52,049	1.6%	6,443	15.4%
67	Heraklion	HER	6.138.477	0.8%	5.0%	N/A	N/A	N/A	N/A
68	Lanzarote	ACE	6.122.548	4.1%	14.8%	48,181	1.6%	1,865	-9.2%
69	Bergen	BGO	5.939.975	-3.6%	0.1%	89,175	-5.7%	3,566	-10.6%
70	Rome	CIA	5.802.877	16.3%	23.0%	37,431	10.2%	15,618	0.2%
71	Thessaloniki	SKG	5.592.460	9.5%	32.4%	N/A	N/A	N/A	N/A
72	Hanover	HAI	5.452.669	3.0%	4.2%	53,084	0.0%	7,163	72.0%
73	Larnaca	LCA	5.407.248	12.8%	9.4%	41,779	-3.0%	25,375	6.6%
74	Adana	ADA	5.405.530	14.4%	24.0%	37,887	9.3%	N/A	N/A
75	Bordeaux	BOD	5.323.114	7.6%	15.3%	52,832	5.7%	9,755	16.0%
76	Riga	RIX	5.162.149	7.2%	7.7%	65,024	2.7%	11,425	-54.0%
77	Valencia	VLC	5.044.156	10.0%	9.7%	49,822	8.1%	13,275	6.1%
78	Fuerteventura	FUE	5.022.909	5.5%	18.1%	38,326	-1.7%	933	-4.6%
79	Palermo	PMO	4.906.050	7.5%	12.9%	39,688	0.0%	472	-9.1%
80	Keflavik	KEF	4.858.683	25.6%	51.4%	34,629	17.1%	43,290	3.9%
81	Belgrade	BEG	4.779.599	3.0%	34.8%	56,116	0.9%	13,067	27.8%
82	Malta	MLA	4.655.883	6.9%	14.8%	36,499	6.8%	14,884	4.9%
83	Rhodes	RHO	4.578.196	0.4%	9.0%	N/A	N/A	N/A	N/A
84	East Midlands	EMA	4.462.067	-1.2%	2.8%	59,010	-1.6%	292,161	4.9%
85	Stavanger	SVG	4.444.041	-5.1%	0.8%	74,371	-6.4%	6,289	40.7%
86	Mugla	DLM	4.373.291	0.9%	4.8%	27,239	6.0%	N/A	N/A
87	Eindhoven	EIN	4.332.093	10.3%	N/A	28,668	5.5%	N/A	N/A
88	Trondheim	TRD	4.319.563	-1.2%	0.2%	53,923	-1.1%	1,408	26.2%
89	London	LCY	4.319.521	18.4%	27.8%	N/A	N/A	N/A	N/A
90	Sevilla	SVQ	4.306.426	11.0%	16.9%	34,721	6.8%	5,870	4.1%
91	Bilbao	BIO	4.269.634	6.6%	12.6%	41,113	3.9%	2,788	-2.4%
92	Ekaterinburg	SVX	4.247.710	-5.2%	-1.0%	41,811	-6.9%	20,197	-8.3%
93	Krakow	KRK	4.221.171	10.6%	15.6%	34,235	2.5%	498	33.2%
94	Sofia	SOF	4.088.942	7.2%	16.7%	38,417	4.6%	16,739	5.2%
95	Bodrum	BJV	3.900.720	0.8%	6.7%	26,471	0.6%	N/A	N/A
96	Tenerife	TFN	3.809.053	4.8%	8.4%	49,182	1.7%	12,643	-18.3%
97	Cagliari	CAG	3.714.039	2.2%	3.7%	27,977	-5.0%	1,859	15.9%
98	Novosibirsk	OVV	3.703.211	-6.4%	-1.2%	40,818	-2.1%	20,499	-16.6%
99	Turin	TRN	3.659.488	6.9%	16.1%	34,744	0.1%	1,174	71.1%
100	Aberdeen	ABZ	3.502.345	-7.0%	0.5%	98,434	-10.3%	6,605	4.0%
101	Trabzon	TZX	3.387.298	21.8%	28.5%	23,084	23.4%	N/A	N/A
102	Nuremberg	NUE	3.368.520	-1.3%	1.8%	41,502	-11.3%	6,334	-7.8%
103	Vilnius	VNO	3.335.234	13.0%	25.1%	37,621	5.8%	6,716	4.6%
104	Katowice	KTW	3.069.278	13.9%	20.6%	25,397	10.6%	12,748	1.7%
105	Menorca	MAH	2.866.486	8.9%	11.8%	28,128	16.8%	1,524	7.2%
106	Chania	CHQ	2.750.723	11.7%	30.6%	N/A	N/A	N/A	N/A
107	Luxembourg	LUX	2.676.424	8.9%	22.2%	53,893	3.9%	737,625	4.2%
108	Bremen	BRE	2.660.713	-4.1%	1.8%	N/A	N/A	609	-15.5%
109	Funchal	FNC	2.605.547	5.9%	N/A	21,421	0.9%	2,810	-22.8%
110	Zagreb	ZAG	2.577.015	6.2%	12.4%	35,362	6.7%	5,081	0.4%
111	Stockholm	BMA	2.525.553	4.3%	8.9%	46,298	5.2%	N/A	N/A
112	Kerkyra	CFU	2.437.261	2.2%	15.7%	N/A	N/A	N/A	N/A
113	Florence	FLR	2.408.225	7.5%	22.1%	27,583	2.5%	73	-34.8%
114	Bourgas	BOJ	2.360.320	-6.7%	-4.8%	16,424	-5.7%	13,271	147.9%
115	Paphos	PFO	2.282.361	8.9%	5.6%	14,263	9.7%	277	-25.1%
116	Chisinau	KIV	2.219.162	24.6%	68.1%	22,269	16.3%	2,188	0.2%
117	Malmo	MMX	2.201.393	3.4%	0.7%	25,345	1.9%	29,009	19.7%
118	Tallinn	TLL	2.167.326	6.8%	10.2%	33,864	10.7%	14,217	-21.1%
119	Kos	KGS	2.142.586	-3.5%	5.6%	N/A	N/A	N/A	N/A
120	Cork	ORK	2.063.837	-3.4%	N/A	18,153	-9.2%	247	-62.7%
121	Tromsoe	TOS	1.994.278	0.3%	3.0%	33,927	-2.4%	1,516	26.0%
122	Tirana	TIA	1.977.044	9.2%	12.5%	20,136	14.5%	1,767	-4.2%
123	Mineralnye Vody	MRV	1.965.713	1.1%	N/A	17,810	4.2%	1,693	-3.3%
124	Split	SPU	1.946.997	11.7%	23.8%	17,741	6.9%	400	-6.8%
125	Tbilisi	TBS	1.847.111	17.2%	N/A	N/A	N/A	N/A	N/A
126	Salzburg	SZG	1.828.306	0.5%	N/A	19,556	1.1%	212	5.0%
127	Kazan	KZN	1.802.709	-7.6%	-2.8%	14,294	-10.5%	2,539	-25.9%
128	Southampton	SOU	1.791.552	-2.2%	4.0%	34,270	-4.1%	185	37.0%
129	Girona	GRO	1.759.699	-18.1%	-35.4%	12,718	-21.8%	89	-3.3%
130	Bodo	BOO	1.717.008	1.9%	2.9%	36,567	-0.8%	1,041	33.1%

CITY	CODE	Passengers			Commercial Movements		Freight		
		Full Year			Full Year		Full Year		
		2015/2014	2015/2013		2015/2014		2015/2014		
131	Dubrovnik	DBV	1.693.934	6.9%	11.3%	13,896	0.6%	255	-12.4%
132	Shannon	SNN	1.616.969	7.3%	26.4%	18,294	-12.8%	11,547	10.9%
133	Pristina	PRN	1.579.406	10.4%	N/A	12,668	5.7%	823	0.7%
134	Santorini/Thira	JTR	1.494.686	26.1%	66.5%	N/A	N/A	N/A	N/A
135	Cluj	CLJ	1.487.603	25.8%	43.5%	14,667	15.2%	1,681	24.9%
136	Skopje	SKP	1.456.385	20.3%	47.9%	13,490	10.8%	2,337	-24.8%
137	Ljubljana	LJU	1.438.304	10.0%	N/A	23,219	3.8%	9,009	0.9%
138	Varna	VAR	1.398.694	0.8%	6.0%	10,866	-1.2%	116	56.8%
139	Ajaccio	AJA	1.362.274	0.0%	0.9%	N/A	N/A	6,170	22.7%
140	Ponta Delgada	PDL	1.267.978	29.5%	38.1%	13,444	15.0%	4,788	-1.2%
141	Zakynthos Island	ZTH	1.267.859	6.6%	26.2%	N/A	N/A	N/A	N/A
142	Strasbourg	SXB	1.190.389	2.0%	0.8%	21,030	1.9%	73	-21.5%
143	Aalesund	AES	1.069.606	-3.4%	-0.7%	13,738	2.0%	307	-27.6%
144	Kristiansand	KRS	1.051.026	-1.1%	-1.5%	16,655	-0.4%	819	22.4%
145	Biarritz	BIQ	1.039.129	-2.4%	-5.3%	9,734	1.6%	N/A	N/A
146	Brest	BES	997.280	0.5%	0.4%	13,766	3.9%	3,242	-8.7%
147	Oulunsalo	OUL	982.792	2.3%	N/A	N/A	N/A	N/A	N/A
148	Graz	GRZ	964.229	7.4%	9.3%	15,466	7.5%	383	0.0%
149	Timisoara	TSR	924.463	25.8%	N/A	10,886	13.0%	2,538	33.7%
150	Volgograd	VOG	901.563	19.0%	31.0%	3,874	-6.4%	763	-14.6%
151	Tivat	TIV	889.006	-2.4%	-1.0%	4,285	2.7%	20	-16.7%
152	Mikonos	JMK	873.619	11.1%	49.7%	N/A	N/A	N/A	N/A
153	Isle Of Man	IOM	793.506	7.0%	5.7%	28,252	9.3%	369	-9.1%
154	Sarajevo	SJJ	772.904	8.9%	16.1%	8,490	68.5%	4,238	105.6%
155	Podgorica	TGD	748.892	6.7%	8.4%	4,749	7.7%	655	6.3%
156	Trieste	TRS	739.135	0.2%	-13.1%	8,102	-1.4%	92	-25.2%
157	Bournemouth	BOH	709.855	6.8%	6.7%	8,647	27.6%	2,145	-11.0%
158	Harstad	EVE	701.693	0.7%	7.1%	8,733	-5.7%	380	-1.0%
159	Haugesund	HAU	654.557	-4.9%	-6.7%	7,441	-5.7%	234	0.0%
160	Pau	PUF	634.038	2.0%	-1.8%	9,131	2.7%	N/A	N/A
161	Lviv	LWO	570.937	-2.5%	-18.7%	7,190	-6.7%	495	122.0%
162	Friedrichshafen	FDH	557.402	-6.0%	5.2%	8,891	-0.8%	38	N/A
163	Astrakhan	ASF	549.977	26.5%	-77.0%	3,668	3.5%	916	-10.4%
164	Linz	LNZ	530.504	-5.5%	-3.5%	8,549	-18.0%	9,740	-11.3%
165	Molde	MOL	512.369	7.2%	11.6%	8,083	3.8%	308	-18.5%
166	Tomsk	TOF	510.974	-4.9%	8.7%	3,549	-12.0%	1,647	-13.4%
167	Toulon	TLN	510.075	-7.4%	-12.4%	7,494	8.6%	N/A	N/A
168	Kefallinia	EFL	492.144	2.8%	14.5%	N/A	N/A	N/A	N/A
169	Zadar	ZAD	486.577	-1.7%	3.3%	4,986	-10.4%	N/A	N/A
170	Mytilene	MJT	481.420	4.0%	20.2%	N/A	N/A	N/A	N/A
171	Rovaniemi	RVN	478.347	7.8%	N/A	N/A	N/A	N/A	N/A
172	Brno	BRQ	466.046	-4.1%	0.7%	4,395	-4.7%	4,583	1.2%
173	Ostersund	OSD	465.208	0.9%	13.8%	7,532	5.2%	95	2.2%
174	Visby	VBY	430.848	5.8%	22.3%	9,208	-5.4%	97	5.4%
175	Clermont-Ferrand	CFE	401.068	-5.6%	-5.8%	9,619	-4.2%	N/A	N/A
176	Alta	ALF	389.506	4.5%	10.3%	7,880	2.5%	428	29.3%
177	Tampere	TMP	357.082	-13.5%	N/A	N/A	N/A	N/A	N/A
178	Kristiansund	KSU	356.418	-7.4%	13.4%	11,976	-5.3%	123	10.8%
179	Turku	TKU	312.105	5.4%	N/A	N/A	N/A	N/A	N/A
180	Kirkenes	KKN	308.373	0.4%	3.8%	6,527	-0.5%	411	1.2%
181	Sibiu	SBZ	307.026	22.6%	37.8%	4,492	3.2%	4	N/A
182	Ostrava	OSR	306.280	3.7%	N/A	5,005	9.3%	1,745	35.3%
183	Liege	LGG	294.848	0.3%	-5.0%	29,042	10.2%	651,002	10.6%
184	Vaasa	VAA	282.437	-13.2%	N/A	N/A	N/A	N/A	N/A
185	Kiruna	KRN	257.713	-4.5%	13.7%	2,617	-16.5%	94	5.6%
186	Ostend	OST	255.038	10.3%	11.7%	2,795	14.4%	16,844	-32.3%
187	Klagenfurt	KLU	227.625	1.2%	-11.9%	3,922	0.1%	N/A	N/A
188	Batumi	BUS	226.476	5.9%	N/A	N/A	N/A	N/A	N/A
189	Bardufoss	BDU	223.917	3.6%	7.9%	2,125	0.0%	61	-3.2%
190	Ronneby	RNB	217.517	1.4%	1.9%	4,287	5.1%	13	N/A
191	Hammerfest	HFT	173.663	1.6%	12.7%	11,110	5.0%	N/A	N/A
192	Floro	FRO	172.610	-15.7%	10.7%	10,289	-9.6%	N/A	N/A
193	Longyearbyen	LYR	163.868	2.5%	8.8%	3,956	-9.8%	321	2.2%
194	Palanga	PLQ	145.527	9.0%	13.7%	2,489	9.5%	N/A	N/A
195	Bronnoysund	BNN	127.446	-9.5%	-8.5%	7,257	-9.1%	N/A	N/A

CITY	CODE	Passengers			Commercial Movements		Freight	
		Full Year			Full Year		Full Year	
		2015/2014	2015/2013		2015/2014		2015/2014	
196 Mo i Rana	MQN	118.734	0.0%	N/A	5,957	-1.8%	N/A	N/A
197 Orsta	HOV	113.856	-6.7%	-8.6%	4,905	-0.1%	N/A	N/A
198 Stokmarknes	SKN	106.430	0.6%	-4.2%	5,024	-1.3%	N/A	N/A
199 Leknes	LKN	104.284	-0.4%	-7.7%	4,755	-0.5%	N/A	N/A
200 Ohrid	OHD	103.994	53.3%	25.2%	800	38.9%	N/A	N/A
201 Vadso	VDS	102.223	0.7%	12.7%	6,519	0.8%	N/A	N/A
202 Sandnessjoen	SSJ	101.849	4.9%	-5.2%	6,000	3.7%	N/A	N/A
203 Monaco	MCM	88.225	-3.1%	-3.9%	33,810	-1.8%	N/A	N/A
204 Sogndal	SOG	86.036	-6.4%	-10.3%	5,182	-1.4%	N/A	N/A
205 Forde	FDE	82.909	-3.4%	-6.1%	4,041	-0.8%	N/A	N/A
206 Mosjoen	MJF	82.489	-2.7%	-5.0%	5,425	-1.5%	N/A	N/A
207 Bucharest	BBU	2.207	-16.6%	-39.4%	957	-25.8%	N/A	N/A

#### Total commercial passengers

International passengers (enplaned + deplaned) + domestic passengers (enplaned + deplaned) + direct transit passengers (passengers who arrive at and depart from the airport on a flight bearing the same number. They are counted only ONCE).

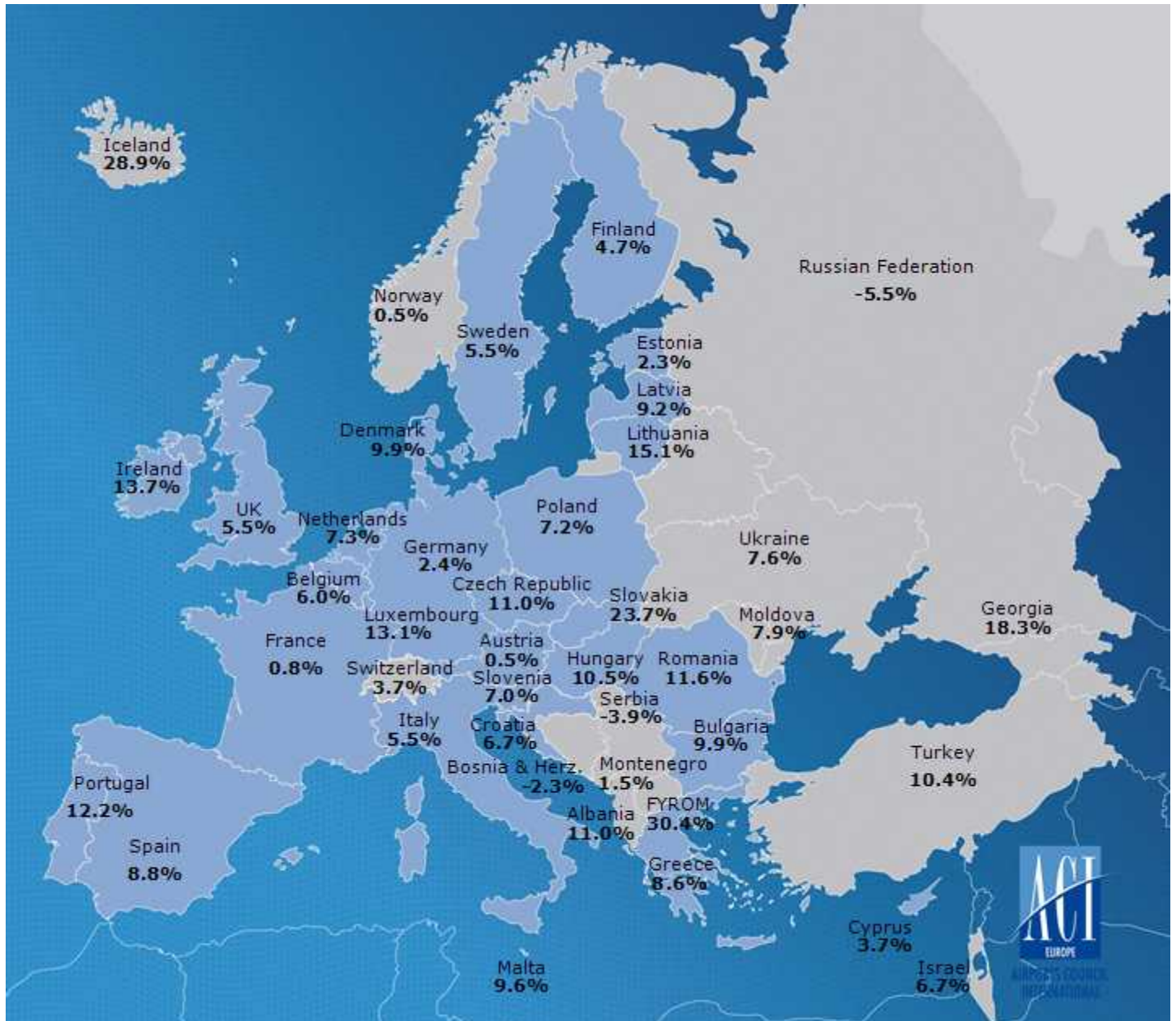
#### Commercial movements

Landing or take off of an aircraft operating a scheduled or non scheduled commercial service.

#### Freight

Freight loaded and unloaded (arriving or departing) at the airport. Freight comprises goods, newspapers, diplomatic bags, parcel

# Passenger Development European Countries Fourth quarter of 2015





## Executive Summary

	Q4 2015/2014	Q4 2015/2013	Q4 2015/2012
<b>Total PAX</b>	<b>5.2%</b>	<b>10.7%</b>	<b>15.9%</b>
EU airports	5.5%	11.3%	14.9%
Non-EU airports	4.2%	8.7%	19.8%
<b>Freight</b>	<b>1.1%</b>	<b>3.7%</b>	<b>8.8%</b>
<b>Movements (total)</b>	<b>2.2%</b>	<b>4.2%</b>	<b>5.0%</b>
PAX + Freight Combined	2.1%	4.2%	5.2%
Cargo only	3.2%	3.8%	3.7%

## Passenger Analysis

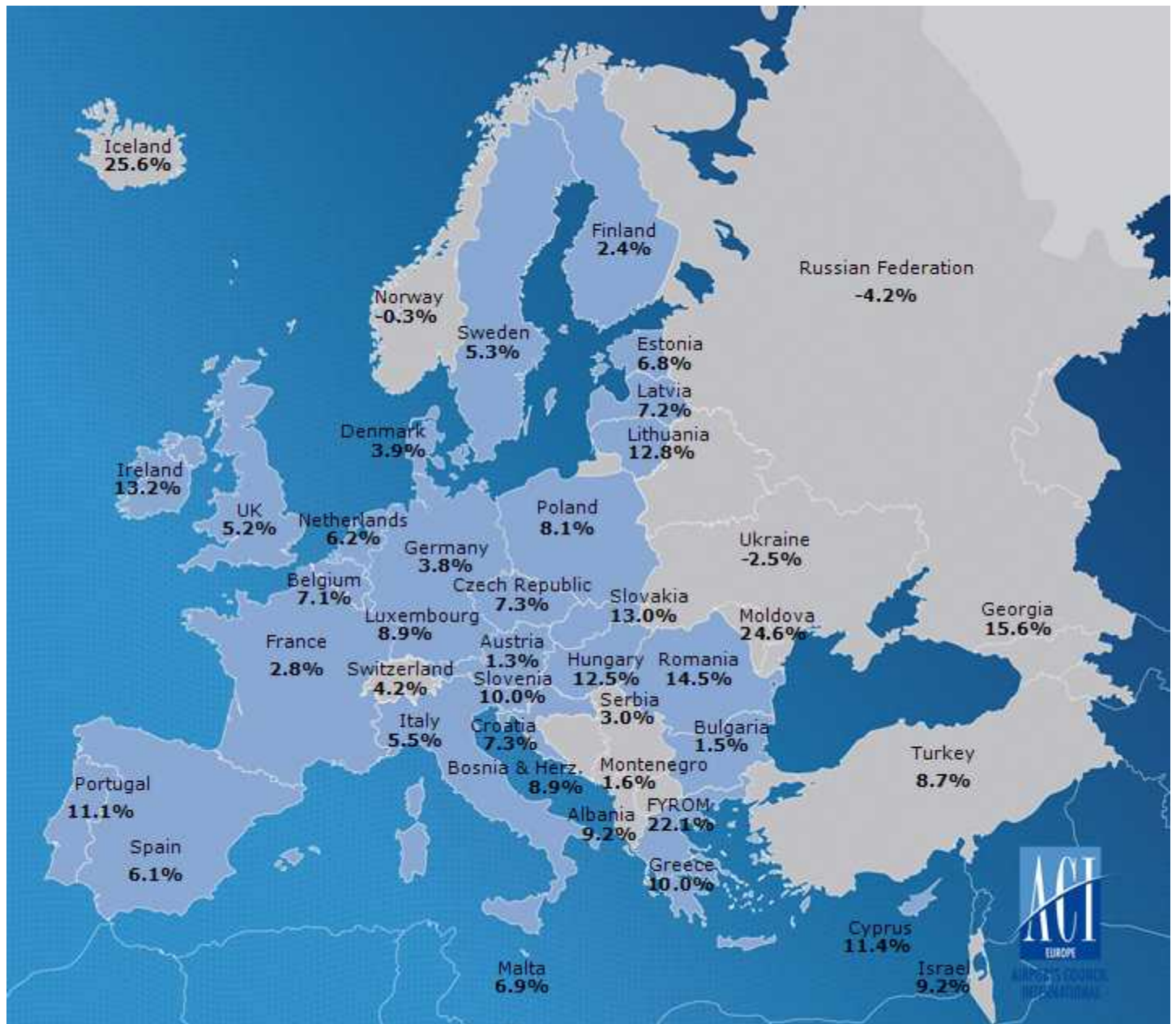
	Q4 2015/2014	Q4 2015/2013	Q4 2015/2012
<b>Total PAX</b>	<b>5.2%</b>	<b>10.7%</b>	<b>15.9%</b>
International	5.5%	11.1%	16.7%
Domestic	4.3%	9.3%	13.6%
Transit *	10.8%	8.7%	2.0%

\* Transit passengers refers exclusively to passengers that come to an airport and leave on the same flight with the same flight number.

### Passenger Traffic Growth for Q4 2015 by Traffic Category

Group 1		Group 2		Group 3		Group 4	
Over 25 million pax		Between 10 and 25 million pax		Between 5 and 10 million pax		Less than 5 million pax	
2015/2014	2015/2013	2015/2014	2015/2013	2015/2014	2015/2013	2015/2014	2015/2013
3.6%	8.5%	6.4%	13.9%	7.9%	12.9%	4.9%	8.9%

# Passenger Development European Countries Full Year 2015



## Executive Summary Full Year

	2015/2014	2015/2013	2015/2012
<b>Total PAX</b>	<b>5.2%</b>	<b>10.9%</b>	<b>14.2%</b>
EU airports	5.6%	10.8%	11.9%
Non-EU airports	3.9%	11.3%	23.5%
<b>Freight</b>	<b>0.7%</b>	<b>4.6%</b>	<b>6.1%</b>
<b>Movements (total)</b>	<b>2.2%</b>	<b>5.0%</b>	<b>4.0%</b>
PAX + Freight Combined	2.4%	5.2%	4.3%
Cargo only	3.5%	3.9%	2.5%

## Passenger Analysis Full Year

	2015/2014	2015/2013	2015/2012
<b>Total PAX</b>	<b>5.2%</b>	<b>10.9%</b>	<b>14.2%</b>
International	5.0%	10.7%	15.2%
Domestic	5.5%	10.7%	10.7%
Transit *	2.3%	5.6%	-6.2%

\* Transit passengers refers exclusively to passengers that come to an airport and leave on the same flight with the same flight number.

### Passenger Traffic Growth for 2015 by Traffic Category

Group 1		Group 2		Group 3		Group 4	
Over 25 million pax		Between 10 and 25 million pax		Between 5 and 10 million pax		Less than 5 million pax	
2015/2014	2015/2013	2015/2014	2015/2013	2015/2014	2015/2013	2015/2014	2015/2013
3.7%	8.7%	6.3%	13.9%	7.1%	11.0%	5.5%	12.3%