





## 2016: moderate increase of European tyre market coupled with continued growth in imports

**Brussels, 23<sup>rd</sup> January 2016** – The European Tyre and Rubber Manufacturers' Association published today its members' sales for the year 2016 and the last quarter of 2016 (table 1). ETRMA also published the [2016 statistics booklet](#), which contains full data on the European rubber and tyre industry, including employment, production, trade and natural rubber consumption.

**Table 1 – Sales of tyres**

In '000 units*	Year 2015	Year 2016	Variation %	4 <sup>th</sup> Q 2015	4 <sup>th</sup> Q 2016	Variation %
<b>Replacement Consumer<sup>1</sup> tyres</b>	<b>202.763</b>	<b>206.672</b>	<b>+2%</b>	<b>44.881</b>	<b>46.763</b>	<b>+4%</b>
 <b>OE<sup>2</sup> Consumer tyre</b>	83.609	86.125	+3%			
<b>Car Summer tyres</b>	115.297	116.280	+1%			
<b>Car Winter tyres</b>	55.378	56.165	+1%			
 <b>Replacement Truck Tyres</b>	<b>9.506</b>	<b>9.765</b>	<b>+3%</b>	<b>2.360</b>	<b>2.533</b>	<b>+7%</b>
<b>OE<sup>2</sup> Truck Tyres</b>	5.601	5.662	+1%			
 <b>Replacement Agricultural Tyres</b>	<b>1.502</b>	<b>1.409</b>	<b>-6%</b>	<b>283</b>	<b>267</b>	<b>-6%</b>
 <b>Replacement Moto and scooter tyres</b>	<b>8.589</b>	<b>8.968</b>	<b>+4%</b>	<b>1.063</b>	<b>1.054</b>	<b>-1%</b>

\*Discrepancies with data previously published is due to periodic data corrections

(source: europool ETRMA)

**Consumer tyres** - despite minor fluctuations during the third quarter and with a strong performance in the last quarter (+4%) - showed positive year-end results (*table 1*), confirming the increase of 2015.

**OE consumer tyres** sales followed the good performance of new car registrations (+6.8%<sup>3</sup>), although the growth was more contained than last year.

For the **truck tyre** segment, the total 2016 sales were positive (+3%) for the fourth year in a row and sales were particularly good in the fourth quarter (+7%). The OE truck tyre market also grew, in line with sales of commercial vehicles (+11.7% for first 11 months<sup>3</sup>).

Sales of **motorcycle and scooter tyres**, despite a negative second half of the year, also showed a good performance, which resulted - at year-end - in a growth of 4% .

**Agricultural tyres** sales continued to experience, a consistently negative trend (-6%).



"All in all, the outcome of 2016 is in line with the expectations and normal for a mature market" said Mrs Cinaralp, Secretary General of ETRMA "for 2017, it is difficult to hope for a greater growth, especially given the continuous growth of imports, which will be confirmed also for 2016".

<sup>1</sup> Consumer tyres include passenger car, SUVs and light commercial vehicles

<sup>2</sup> OE sales also include Turkey

<sup>3</sup> Source of vehicle registration data: ACEA

**Table 2 – Trade of tyres - main segments**

In '000 units		2015	2016	Variation
		Imports	Import <sub>fc</sub>	%
	<b>TOTAL</b>	123.567	143.381 <sub>fc</sub>	+16%
	<b>China</b>	57.751	65.513 <sub>fc</sub>	
	<b>TOTAL</b>	6.201	7.037 <sub>fc</sub>	+13%
	<b>China</b>	3.839	4.415 <sub>fc</sub>	

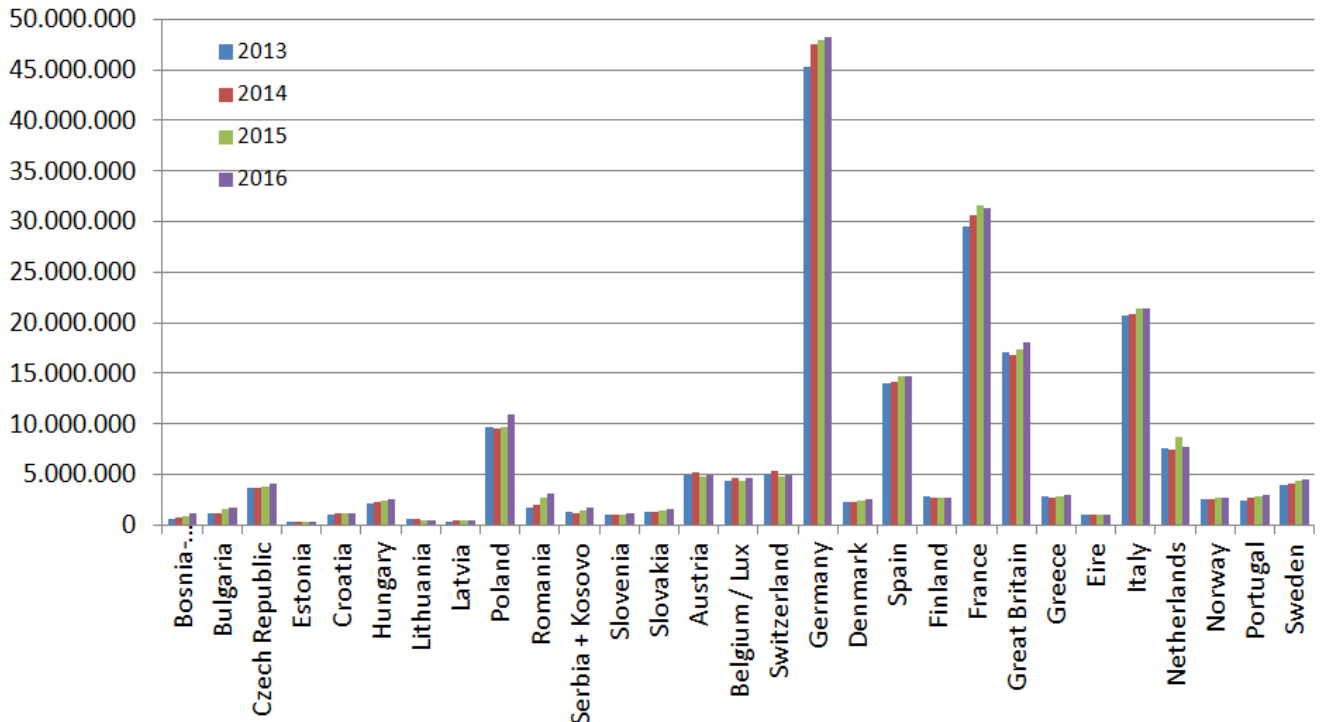
Eurostat data is not yet complete for the whole of 2016. However, the results for the first 11 months of 2016 is sufficient to make a forecast (*fc*), which shows a consistent growth of tyre imports, particularly for passenger cars and truck tyres, dominated from China.

Like every year, the Annex gives a breakdown per country of the tyre replacement trend sales for the past four years.

For further information, please contact [Marta Conti](#), Communication Manager

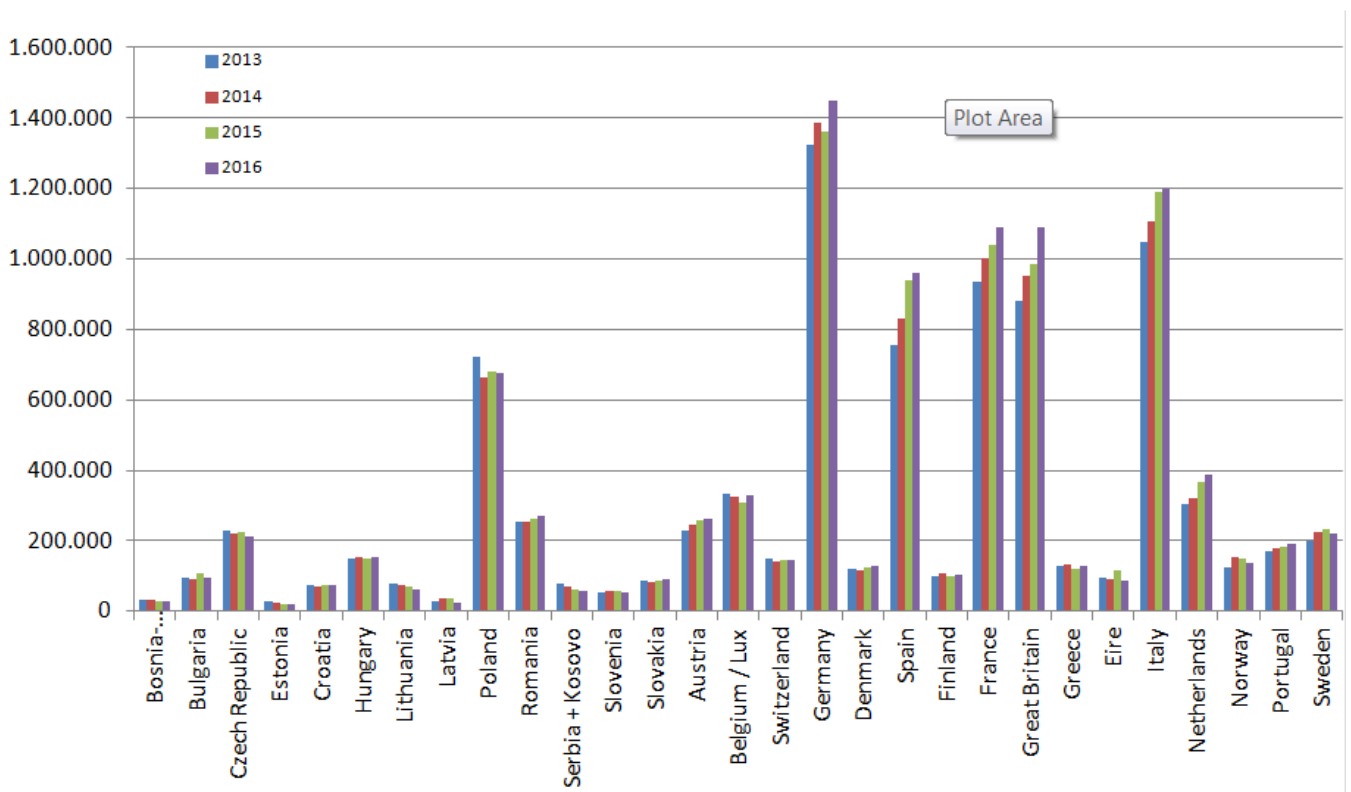
## ANNEX: COUNTRY DATA

### Replacement consumer tyre sales in Europe (ETRMA members)



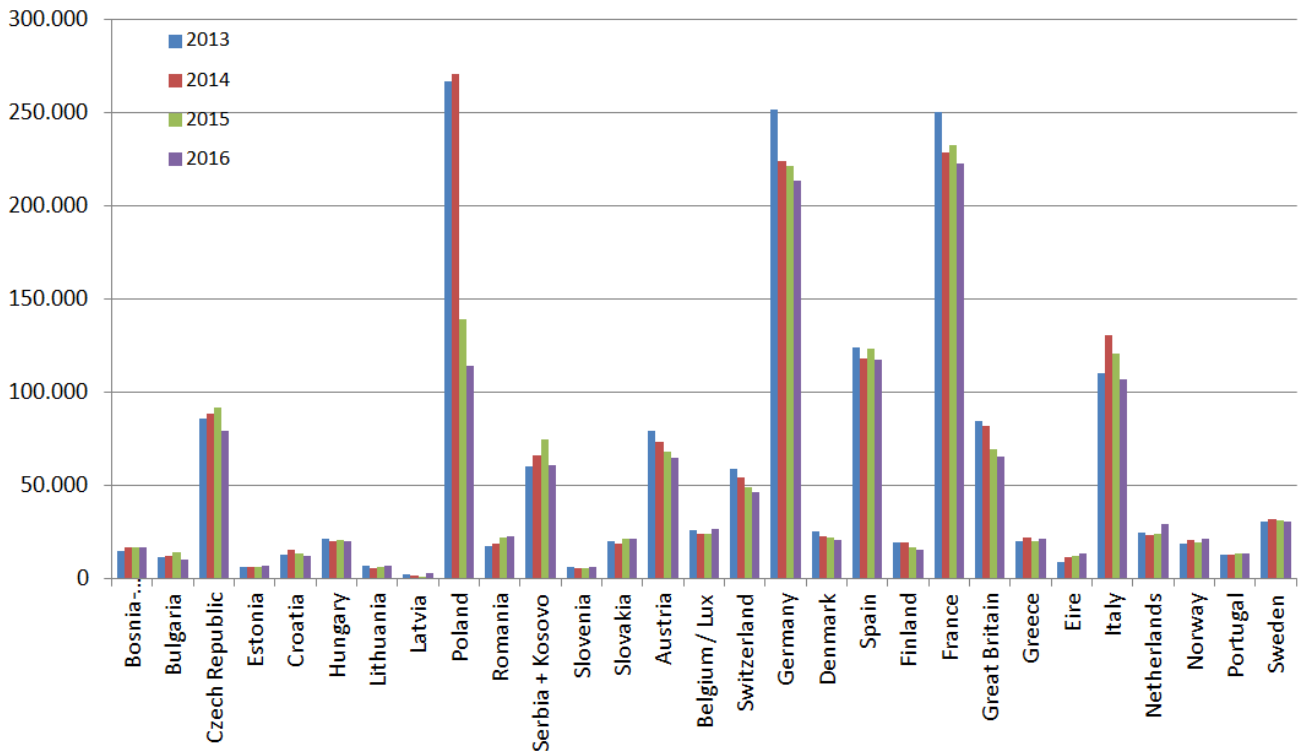
(source: europool ETRMA)

### Replacement truck and bus tyre sales in Europe (ETRMA members)



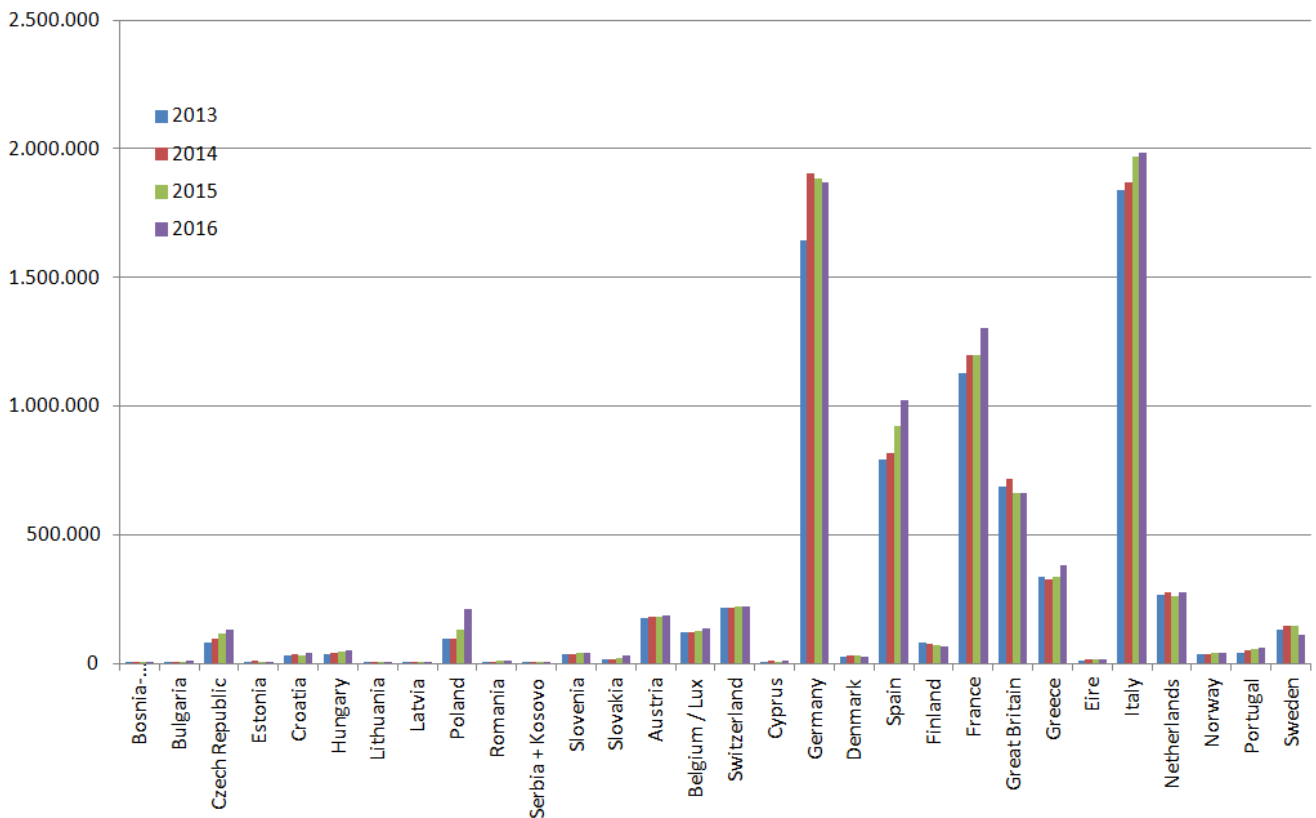
(source: europool ETRMA)

## Replacement agricultural tyre sales in Europe (ETRMA members)



(source: europool ETRMA)

## Replacement motorcycle tyre sales in Europe (ETRMA members)



(source: europool ETRMA)